

B 2 0 7 8 P 4 8 8

RE-SUBDIVISION OF THE LANDS OF RAWLEY SPRINGS, L.C.
LOTS 35-51
THE HIGHLANDS AT RAWLEY SPRINGS SECTION 3

Central District, Rockingham County, Virginia
May 10, 2002

OWNER'S CONSENT AND DEDICATION

KNOW ALL MEN BY THESE PRESENTS, THAT THE SUBDIVISION OF LAND AS SHOWN ON THIS PLAT, AND DESIGNATED AS RE-SUBDIVISION OF THE LANDS OF RAWLEY SPRINGS, L.C., LOTS 35-51, THE HIGHLANDS AT RAWLEY SPRINGS SECTION 3, IS WITH THE FREE CONSENT AND IN ACCORDANCE WITH THE DESIRES OF THE UNDERSIGNED OWNER. THE SAID LAND HEREBY BEING SUBDIVIDED IS A PORTION OF THE LANDS CONVEYED TO RAWLEY SPRINGS, L.C., A VIRGINIA LIMITED LIABILITY COMPANY, BY DEED DATED APRIL 24, 1997, AND RECORDED IN THE AFORESAID CLERK'S OFFICE IN DEED BOOK 1491, PAGE 66.

GIVEN UNDER MY HAND THIS 14 DAY OF May, 2002.

RAWLEY SPRINGS, L.C.
A VIRGINIA LIMITED LIABILITY COMPANY

BY: Barry K. Kelley
BARRY K. KELLEY, MANAGER

STATE OF VIRGINIA AT LARGE
CITY/COUNTY OF Harrisonburg, TO WIT:

THE FOREGOING INSTRUMENT WAS ACKNOWLEDGED BEFORE ME THIS 14th DAY OF May, 2002 BY BARRY K. KELLEY, MANAGER ON BEHALF OF RAWLEY SPRINGS, L.C.

Jennifer D. Pace
NOTARY PUBLIC

3/31/05
MY COMMISSION EXPIRES

To view plat see plat cabinet + C Sliae C-113

B 2 0 7 8 P 4 8 9

VIRGINIA: In the Clerk's Office of the Circuit Court of Rockingham County
the foregoing instrument was this day presented in the office aforesaid, and is
together with the certificate of acknowledgement annexed, admitted to record this
15 day of May, 20 02 at 10:07A.M. I certify that
taxes were paid when applicable:

Sec. 58-54 - State _____ County _____ City _____
Sec. 58-54.1 - State _____ County _____ City _____ Transfer _____
Recording 19.00 TESTE

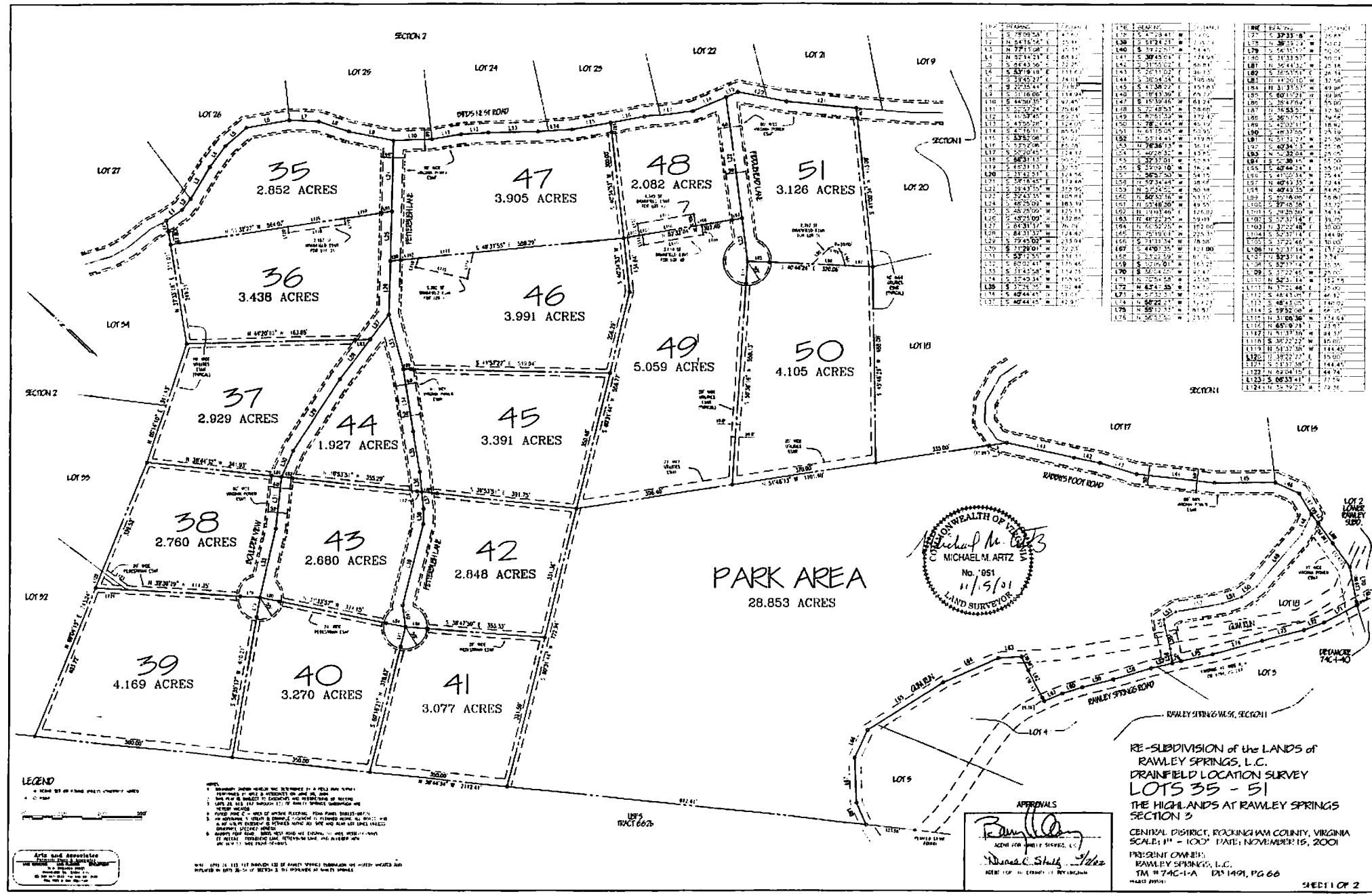
L. WAYNE HARPER
CLERK

Deed Book No 2078 Page 488

02 MAY 15 AM 10:07
RECORDED
CIRCUIT COURT
L. WAYNE HARPER, CLERK

014395

2019/488



LINE	BEARING	DISTANCE	LINE	BEARING	DISTANCE	LINE	BEARING	DISTANCE
1	S 78°05'54" E	11.71	13	S 51°12'21" W	21.51	1	S 78°05'54" E	11.71
2	N 84°16'52" W	21.51	14	S 39°43'04" E	21.51	2	N 84°16'52" W	21.51
3	N 77°11'58" E	21.51	15	S 29°11'02" E	21.51	3	N 77°11'58" E	21.51
4	N 82°14'14" E	21.51	16	S 30°43'04" E	21.51	4	N 82°14'14" E	21.51
5	S 84°43'36" E	21.51	17	S 31°55'02" E	21.51	5	S 84°43'36" E	21.51
6	S 83°19'18" E	21.51	18	S 43°30'22" E	21.51	6	S 83°19'18" E	21.51
7	S 74°23'24" E	21.51	19	S 31°16'06" E	21.51	7	S 74°23'24" E	21.51
8	S 31°16'06" E	21.51	20	S 44°20'24" E	21.51	8	S 31°16'06" E	21.51
9	S 44°20'24" E	21.51	21	S 22°22'24" E	21.51	9	S 44°20'24" E	21.51
10	S 22°22'24" E	21.51	22	S 10°59'48" E	21.51	10	S 22°22'24" E	21.51
11	S 10°59'48" E	21.51	23	S 47°15'06" E	21.51	11	S 10°59'48" E	21.51
12	S 47°15'06" E	21.51	24	S 33°55'06" E	21.51	12	S 47°15'06" E	21.51
13	S 33°55'06" E	21.51	25	S 22°22'24" E	21.51	13	S 33°55'06" E	21.51
14	S 22°22'24" E	21.51	26	S 10°59'48" E	21.51	14	S 22°22'24" E	21.51
15	S 10°59'48" E	21.51	27	S 47°15'06" E	21.51	15	S 10°59'48" E	21.51
16	S 47°15'06" E	21.51	28	S 33°55'06" E	21.51	16	S 47°15'06" E	21.51
17	S 33°55'06" E	21.51	29	S 22°22'24" E	21.51	17	S 33°55'06" E	21.51
18	S 22°22'24" E	21.51	30	S 10°59'48" E	21.51	18	S 22°22'24" E	21.51
19	S 10°59'48" E	21.51	31	S 47°15'06" E	21.51	19	S 10°59'48" E	21.51
20	S 47°15'06" E	21.51	32	S 33°55'06" E	21.51	20	S 47°15'06" E	21.51
21	S 33°55'06" E	21.51	33	S 22°22'24" E	21.51	21	S 33°55'06" E	21.51
22	S 22°22'24" E	21.51	34	S 10°59'48" E	21.51	22	S 22°22'24" E	21.51
23	S 10°59'48" E	21.51	35	S 47°15'06" E	21.51	23	S 10°59'48" E	21.51
24	S 47°15'06" E	21.51	36	S 33°55'06" E	21.51	24	S 47°15'06" E	21.51
25	S 33°55'06" E	21.51	37	S 22°22'24" E	21.51	25	S 33°55'06" E	21.51
26	S 22°22'24" E	21.51	38	S 10°59'48" E	21.51	26	S 22°22'24" E	21.51
27	S 10°59'48" E	21.51	39	S 47°15'06" E	21.51	27	S 10°59'48" E	21.51
28	S 47°15'06" E	21.51	40	S 33°55'06" E	21.51	28	S 47°15'06" E	21.51
29	S 33°55'06" E	21.51	41	S 22°22'24" E	21.51	29	S 33°55'06" E	21.51
30	S 22°22'24" E	21.51	42	S 10°59'48" E	21.51	30	S 22°22'24" E	21.51
31	S 10°59'48" E	21.51	43	S 47°15'06" E	21.51	31	S 10°59'48" E	21.51
32	S 47°15'06" E	21.51	44	S 33°55'06" E	21.51	32	S 47°15'06" E	21.51
33	S 33°55'06" E	21.51	45	S 22°22'24" E	21.51	33	S 33°55'06" E	21.51
34	S 22°22'24" E	21.51	46	S 10°59'48" E	21.51	34	S 22°22'24" E	21.51
35	S 10°59'48" E	21.51	47	S 47°15'06" E	21.51	35	S 10°59'48" E	21.51
36	S 47°15'06" E	21.51	48	S 33°55'06" E	21.51	36	S 47°15'06" E	21.51
37	S 33°55'06" E	21.51	49	S 22°22'24" E	21.51	37	S 33°55'06" E	21.51
38	S 22°22'24" E	21.51	50	S 10°59'48" E	21.51	38	S 22°22'24" E	21.51
39	S 10°59'48" E	21.51	51	S 47°15'06" E	21.51	39	S 10°59'48" E	21.51
40	S 47°15'06" E	21.51				40	S 47°15'06" E	21.51
41	S 33°55'06" E	21.51				41	S 33°55'06" E	21.51
42	S 22°22'24" E	21.51				42	S 22°22'24" E	21.51
43	S 10°59'48" E	21.51				43	S 10°59'48" E	21.51
44	S 47°15'06" E	21.51				44	S 47°15'06" E	21.51
45	S 33°55'06" E	21.51				45	S 33°55'06" E	21.51
46	S 22°22'24" E	21.51				46	S 22°22'24" E	21.51
47	S 10°59'48" E	21.51				47	S 10°59'48" E	21.51
48	S 47°15'06" E	21.51				48	S 47°15'06" E	21.51
49	S 33°55'06" E	21.51				49	S 33°55'06" E	21.51
50	S 22°22'24" E	21.51				50	S 22°22'24" E	21.51
51	S 10°59'48" E	21.51				51	S 10°59'48" E	21.51
52	S 47°15'06" E	21.51				52	S 47°15'06" E	21.51
53	S 33°55'06" E	21.51				53	S 33°55'06" E	21.51
54	S 22°22'24" E	21.51				54	S 22°22'24" E	21.51
55	S 10°59'48" E	21.51				55	S 10°59'48" E	21.51
56	S 47°15'06" E	21.51				56	S 47°15'06" E	21.51
57	S 33°55'06" E	21.51				57	S 33°55'06" E	21.51
58	S 22°22'24" E	21.51				58	S 22°22'24" E	21.51
59	S 10°59'48" E	21.51				59	S 10°59'48" E	21.51
60	S 47°15'06" E	21.51				60	S 47°15'06" E	21.51
61	S 33°55'06" E	21.51				61	S 33°55'06" E	21.51
62	S 22°22'24" E	21.51				62	S 22°22'24" E	21.51
63	S 10°59'48" E	21.51				63	S 10°59'48" E	21.51
64	S 47°15'06" E	21.51				64	S 47°15'06" E	21.51
65	S 33°55'06" E	21.51				65	S 33°55'06" E	21.51
66	S 22°22'24" E	21.51				66	S 22°22'24" E	21.51
67	S 10°59'48" E	21.51				67	S 10°59'48" E	21.51
68	S 47°15'06" E	21.51				68	S 47°15'06" E	21.51
69	S 33°55'06" E	21.51				69	S 33°55'06" E	21.51
70	S 22°22'24" E	21.51				70	S 22°22'24" E	21.51
71	S 10°59'48" E	21.51				71	S 10°59'48" E	21.51
72	S 47°15'06" E	21.51				72	S 47°15'06" E	21.51
73	S 33°55'06" E	21.51				73	S 33°55'06" E	21.51
74	S 22°22'24" E	21.51				74	S 22°22'24" E	21.51
75	S 10°59'48" E	21.51				75	S 10°59'48" E	21.51
76	S 47°15'06" E	21.51				76	S 47°15'06" E	21.51
77	S 33°55'06" E	21.51				77	S 33°55'06" E	21.51
78	S 22°22'24" E	21.51				78	S 22°22'24" E	21.51
79	S 10°59'48" E	21.51				79	S 10°59'48" E	21.51
80	S 47°15'06" E	21.51				80	S 47°15'06" E	21.51
81	S 33°55'06" E	21.51				81	S 33°55'06" E	21.51
82	S 22°22'24" E	21.51				82	S 22°22'24" E	21.51
83	S 10°59'48" E	21.51				83	S 10°59'48" E	21.51
84	S 47°15'06" E	21.51				84	S 47°15'06" E	21.51
85	S 33°55'06" E	21.51				85	S 33°55'06" E	21.51
86	S 22°22'24" E	21.51				86	S 22°22'24" E	21.51
87	S 10°59'48" E	21.51				87	S 10°59'48" E	21.51
88	S 47°15'06" E	21.51				88	S 47°15'06" E	21.51
89	S 33°55'06" E	21.51				89	S 33°55'06" E	21.51
90	S 22°22'24" E	21.51				90	S 22°22'24" E	21.51
91	S 10°59'48" E	21.51				91	S 10°59'48" E	21.51
92	S 47°15'06" E	21.51				92	S 47°15'06" E	21.51
93	S 33°55'06" E	21.51				93	S 33°55'06" E	21.51
94	S 22°22'24" E	21.51				94	S 22°22'24" E	21.51
95	S 10°59'48" E	21.51				95	S 10°59'48" E	21.51
96	S 47°15'06" E	21.51				96	S 47°15'06" E	21.51
97	S 33°55'06" E	21.51				97	S 33°55'06" E	21.51
98	S 22°22'24" E	21.51				98	S 22°22'24" E	21.51
99	S 10°59'48" E	21.51				99	S 10°59'48" E	21.51
100	S 47°15'06" E	21.51				100	S 47°15'06" E	21.51

COMMONWEALTH OF VIRGINIA
 Michael M. Artz
 No. 051
 11/5/01
 LAND SURVEYOR

PARK AREA
 28.853 ACRES

LEGEND
 1. BOUNDARY LINES SHOWN HEREIN ARE THE RESULT OF A FIELD SURVEY BY THE SURVEYOR.
 2. DIMENSIONS OF LOTS ARE GIVEN IN ACRES AND FEET.
 3. DIMENSIONS OF BOUNDARY LINES ARE GIVEN IN FEET AND INCHES.
 4. DIMENSIONS OF CURVED BOUNDARY LINES ARE GIVEN IN FEET AND INCHES.
 5. DIMENSIONS OF CURVED BOUNDARY LINES ARE GIVEN IN FEET AND INCHES.
 6. DIMENSIONS OF CURVED BOUNDARY LINES ARE GIVEN IN FEET AND INCHES.
 7. DIMENSIONS OF CURVED BOUNDARY LINES ARE GIVEN IN FEET AND INCHES.
 8. DIMENSIONS OF CURVED BOUNDARY LINES ARE GIVEN IN FEET AND INCHES.
 9. DIMENSIONS OF CURVED BOUNDARY LINES ARE GIVEN IN FEET AND INCHES.
 10. DIMENSIONS OF CURVED BOUNDARY LINES ARE GIVEN IN FEET AND INCHES.

APPROVALS
 [Signature]
 AGENT FOR RAWLEY SPRINGS, L.C.
 [Signature]
 AGENT FOR THE COUNTY OF ROCKINGHAM

RE-SUBDIVISION of the LANDS of
 RAWLEY SPRINGS, L.C.
 DRAINFIELD LOCATION SURVEY
 LOTS 35 - 51
 THE HIGHLANDS AT RAWLEY SPRINGS
 SECTION 3
 CENTRAL DISTRICT, ROCKINGHAM COUNTY, VIRGINIA
 SCALE: 1" = 100' DATE: NOVEMBER 15, 2001
 PRESENT OWNER:
 RAWLEY SPRINGS, L.C.
 TM # 74C-1-A DTS 1491, PG 66
 SHEET 1 OF 2